



51a Haydons Road, Wimbledon, London, SW19 1HG
£2,800 Per month



51a Haydons Road, Wimbledon, London, SW19 1HG

£2,800 Per month

Nestled in the vibrant area of Haydons Road, Wimbledon, this charming flat conversion offers a delightful blend of comfort and convenience. With three well-proportioned bedrooms, this property is perfect for families or professionals seeking a spacious living environment. The flat features a welcoming reception room, ideal for relaxation or entertaining guests, providing a warm and inviting atmosphere.

The property boasts three double bedrooms and two modern bathrooms, ensuring ample facilities for all residents. The thoughtful layout maximises space and light, creating a pleasant living experience.

Wimbledon is renowned for its excellent transport links, green spaces, and vibrant community, making this location highly desirable. With local shops, cafes, and restaurants just a stone's throw away, you will find everything you need within easy reach.

This flat conversion on Haydons Road presents an excellent opportunity for those looking to enjoy the best of Wimbledon living. Don't miss your chance to make this lovely property your new home.

Description

Nestled in the vibrant area of Haydons Road, Wimbledon, this charming flat conversion offers a delightful blend of comfort and convenience. With three well-proportioned bedrooms, this property is perfect for families or professionals seeking a spacious living environment. The flat features a welcoming reception room, ideal for relaxation or entertaining guests, providing a warm and inviting atmosphere.

The property boasts three double bedrooms and two modern bathrooms, ensuring ample facilities for all residents. The thoughtful layout maximises space and light, creating a pleasant living experience.

Situation

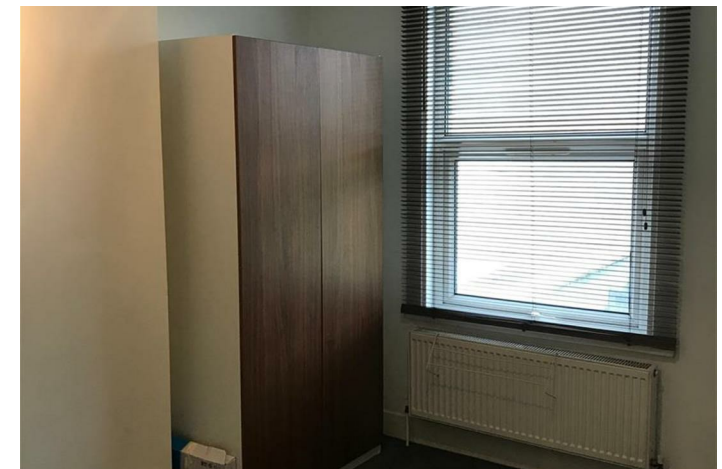
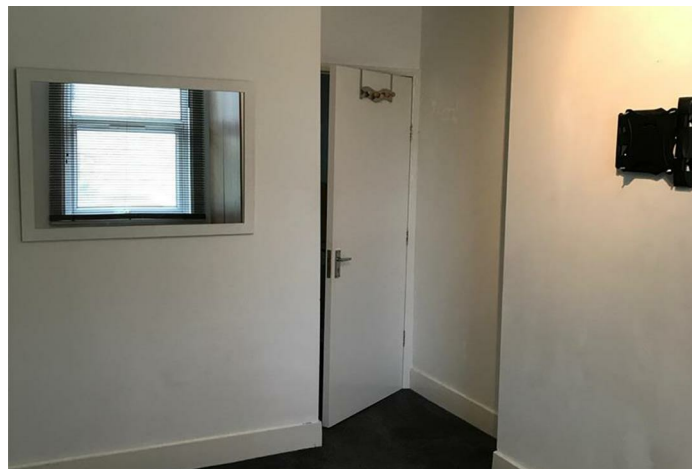
Wimbledon is renowned for its excellent transport links, green spaces, and vibrant community, making this location highly desirable. With local shops, cafes, and restaurants just a stone's throw away, you will find everything you need within easy reach.

This flat conversion on Haydons Road presents an excellent opportunity for those looking to enjoy the best of Wimbledon living. Don't miss your chance to make this lovely property your new home.

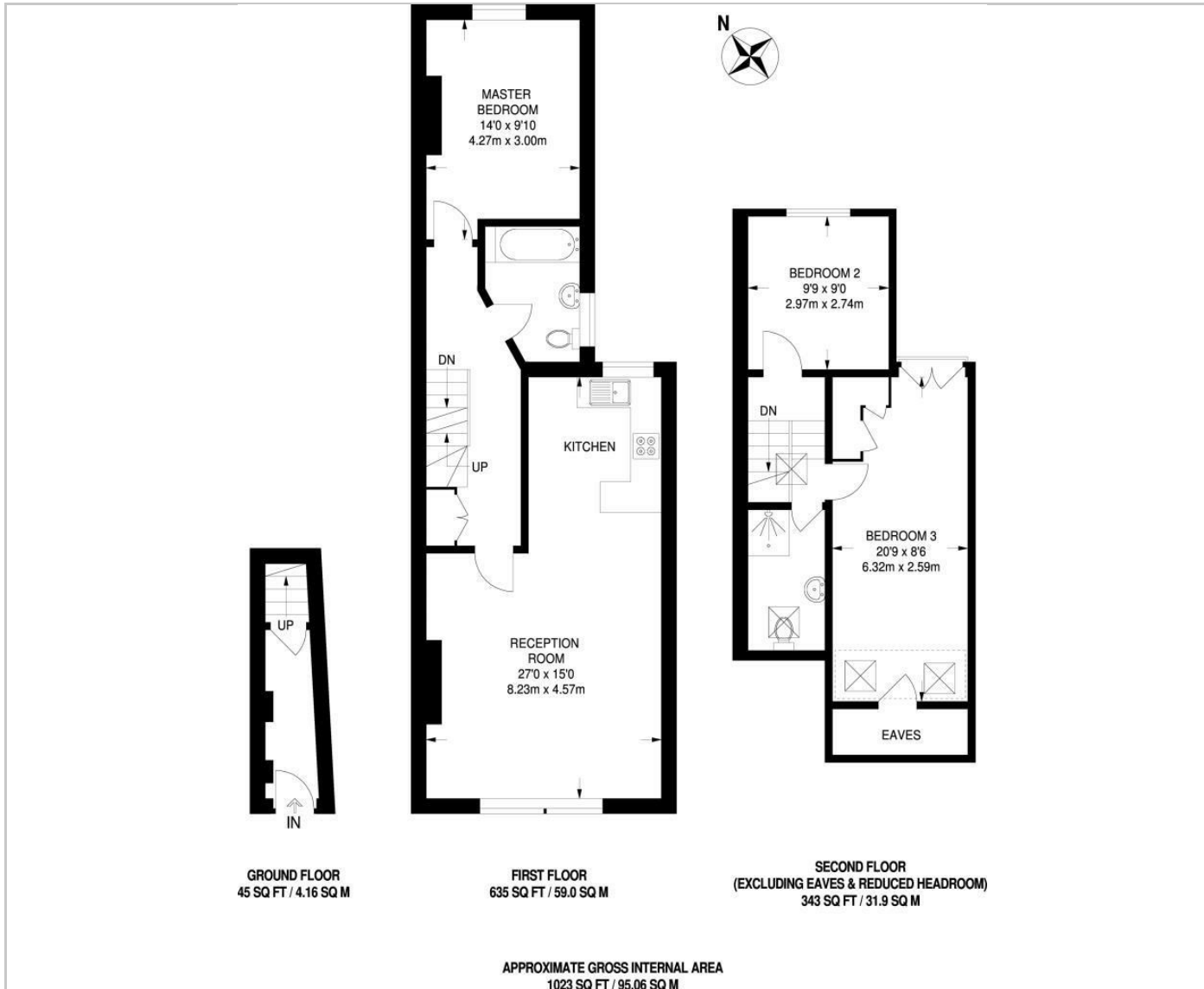
Part furnished

Council Tax Band:

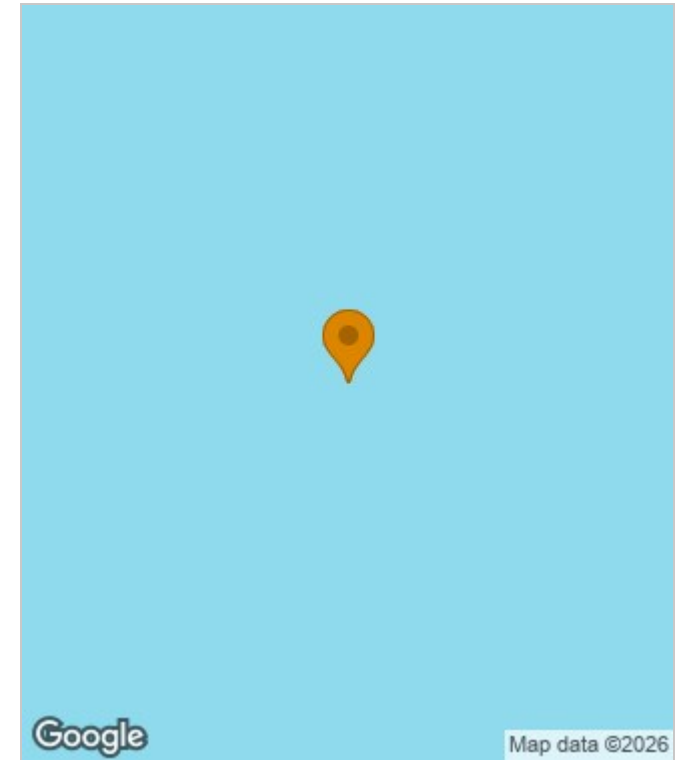
Available: 14th April 2026



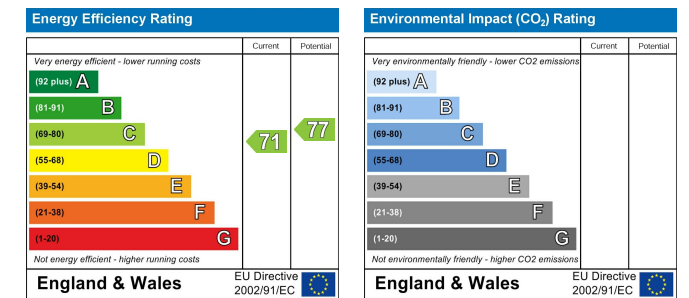
Floor Plans



Area Map



Energy Performance Graph



These particulars, whilst believed to be accurate are set out as a general outline only for guidance and do not constitute any part of an offer or contract. Intending purchasers should not rely on them as statements of representation of fact, but must satisfy themselves by inspection or otherwise as to their accuracy. No person in this firm's employment has the authority to make or give any representation or warranty in respect of the property.

The Nucleus Brunel Way, Dartford, Kent, DA1 5GA

Tel: 02081758868 Email: property@lyhpropertyconsultants.com www.lyhpropertyconsultants.com